

## HERU 200 T EC



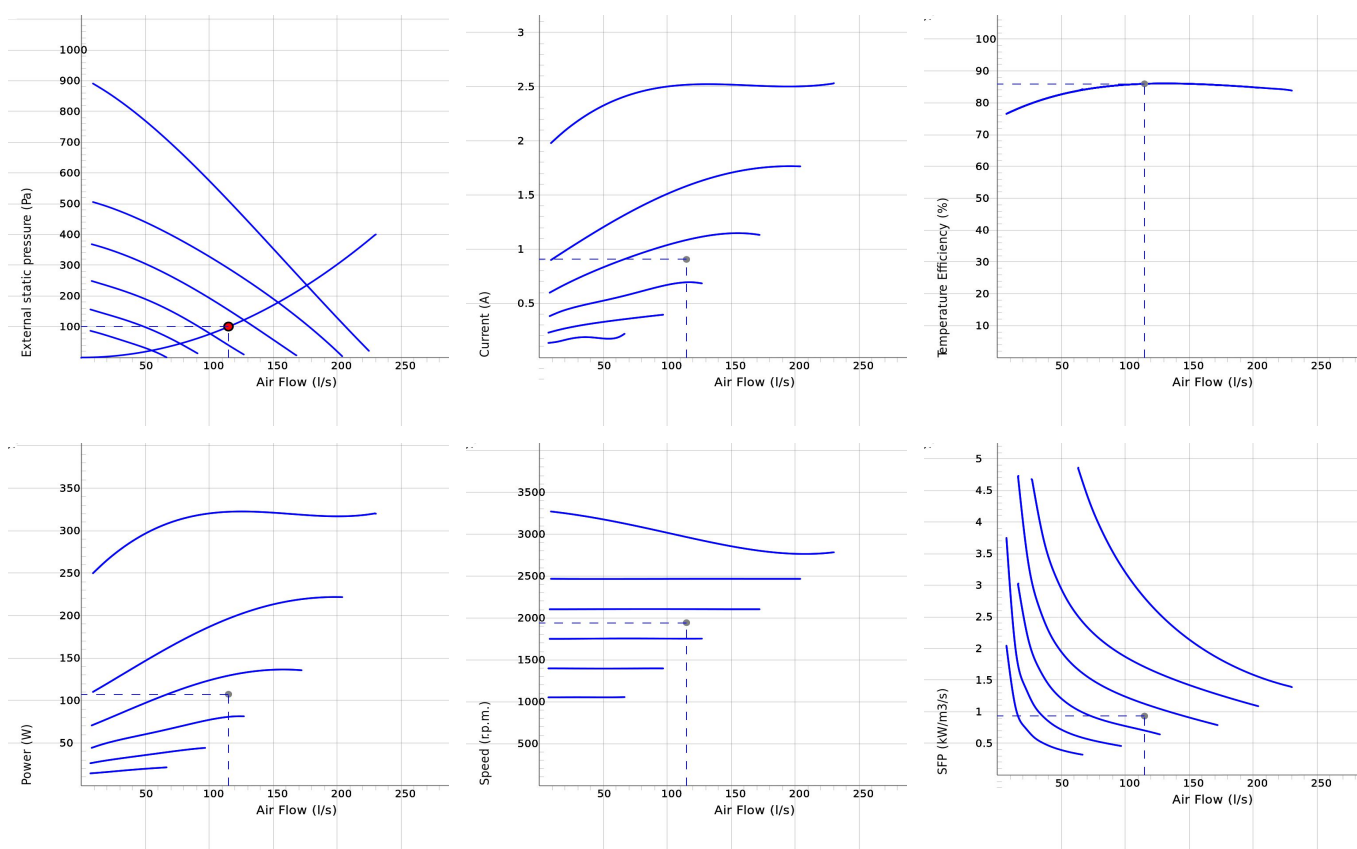
### HERU@200 T EC

- Floor model with top connection.
- Designed for supply and exhaust air ventilation with energy recovery.
- Suitable for installation in apartments, small houses, offices and other premises where there are stringent requirements on the indoor environment.
- High temperature efficiency 86%, low energy consumption (SFP), low sound level, high operating reliability and provides clean indoor air.
- Unique design minimizes all thermal bridges.
- For easy handling, the unit is remote-controlled using the wireless control unit for operation and monitoring.
- Comes prepared for Modbus communication via RS485 (accessory needed).
- Airflow is generated by two silent radial fans with EC motors and impellers with backward curved blades.
- The fans are connected with quick connectors and are very easy to remove for cleaning.
- A regenerative, non-hygroscopic, aluminum rotating heat exchanger located in the center of the unit. The heat exchanger can also be removed for cleaning.
- Incinerable panel filter ISO ePM1 50% as standard, for both exhaust and supply air. The filter is very easy to change.
- Integrated controls for heating/cooling.
- Available with or without integrated electric heater.
- The unit is made from aluminum-zinc-plated steel and insulated.
- For placement in warm areas, such as laundry, storage or utility rooms.
- Available in either right-hand or left-hand design.
- Integrated silencer on the supply air and extract air side.

### NOTE!

**The warranty of The HERU@ is only valid if accessories/equipment (e.g. filters) from H. Östberg AB are used.**

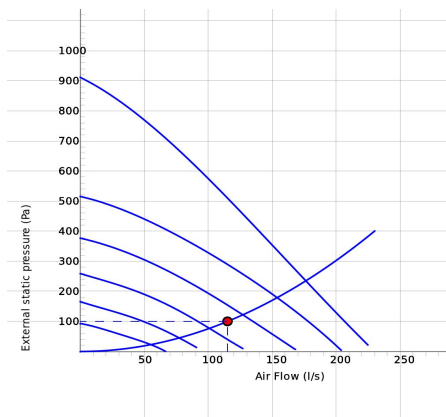
## DIAGRAMS



## Work Point

Air Flow (l/s)	External static pressure (Pa)	Power (W)	Speed (r.p.m.)	Current (A)	Efficiency (%)	SFP (kW/m <sup>3</sup> /s)	Voltage (V)
115	100	107	1944	0.906	86	0.932	6.54

## SOUND DATA



	Tot	63	125	250	500	1k	2k	4k	8k
Supply Lw dB(A)	70	58	62	66	62	60	58	51	44
Extract Lw dB(A)	61	52	53	53	56	53	45	40	26
Surrounding Lw dB(A)	51	45	48	45	41	34	31	29	28
Surrounding Lp dB (A) 3m	44	38	41	38	34	27	24	22	21

## Work Point

Air Flow (l/s) 176	External static pressure (Pa) 235	Power (W) 107	Speed (r.p.m.) 1944	Current (A) 0.906	Efficiency (%) 86	SFP (kW/m3/s) 0.932	Voltage (V) 6.54
-----------------------	--------------------------------------	------------------	------------------------	----------------------	----------------------	------------------------	---------------------

## TECHNICAL DATA

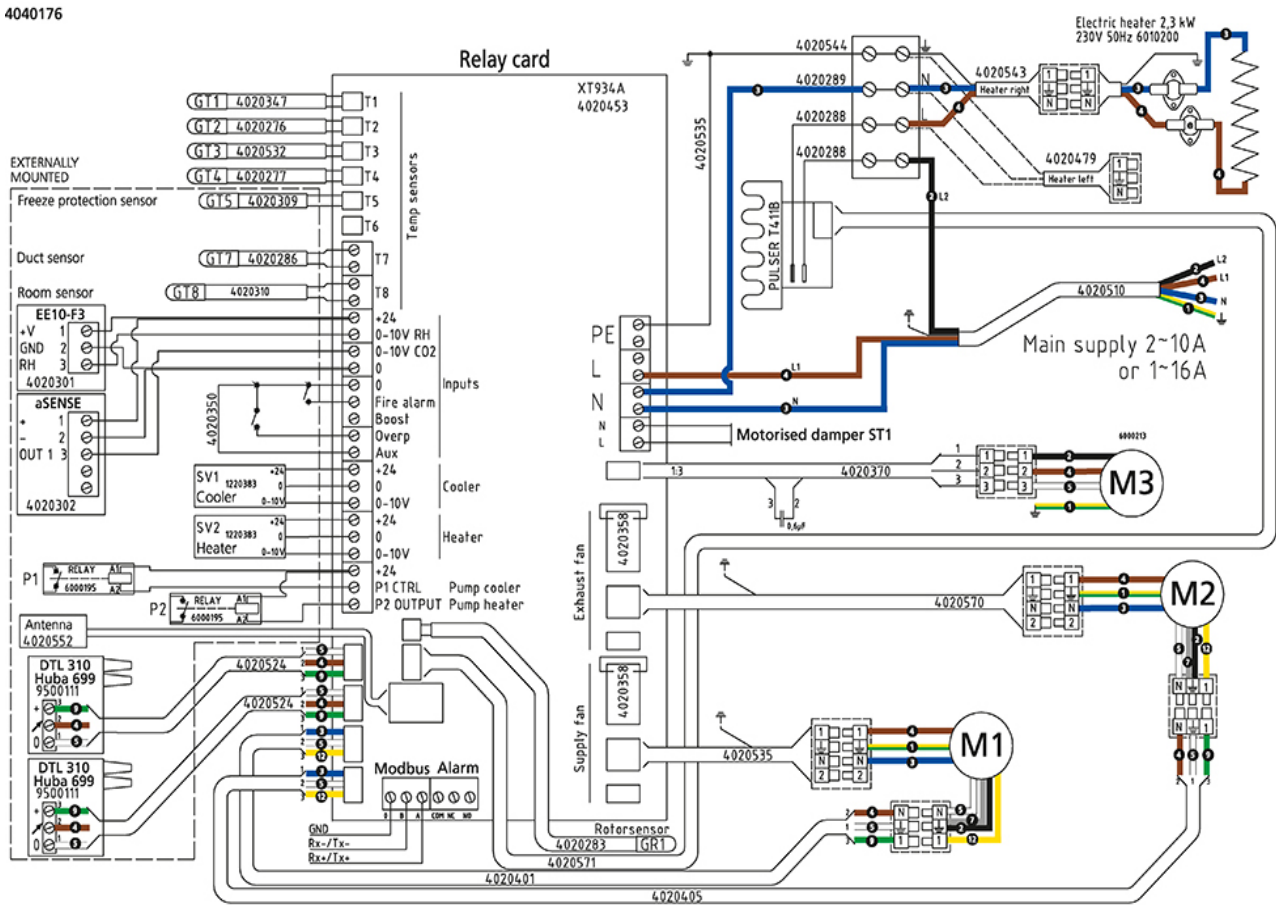
Parameter	HERU 200 T EC AR 2300W 8010405		HERU 200 T EC AL 2300W 8010407		HERU 200 T EC CR 8010406		HERU 200 T EC CL 8010408	
	Value	Unit	Value	Unit	Value	Unit	Value	Unit
Voltage	230	V	230	V	230	V	230	V
Phase	1	~	1	~	1	~	1	~
Frequency	50	Hz	50	Hz	50	Hz	50	Hz
Power	2650	W	2650	W	348	W	348	W
Power, fans	321	W	321	W	321	W	321	W
Power, heater	2300	W	2300	W	0	W	0	W
Current	12.7	A	12.7	A	2.66	A	2.66	A
Current, fans	2.56	A	2.56	A	2.56	A	2.56	A
Current, heater	10.00	A	10.00	A	0	A	0	A
Speed	2780	r.p.m.	2780	r.p.m.	2780	r.p.m.	2780	r.p.m.
Sound pressure level at 3 m	43	dB(A)	43	dB(A)	43	dB(A)	43	dB(A)
Weight	132.0	kg	132.0	kg	130.0	kg	130.0	kg
Enclosure class	41	IP	41	IP	41	IP	41	IP
Duct connection	250	mm	250	mm	250	mm	250	mm
Max. flow	230	l/s	230	l/s	230	l/s	230	l/s
Max. pressure	914	Pa	914	Pa	914	Pa	914	Pa
Voltage range	220-240	V	220-240	V	220-240	V	220-240	V

## ECODESIGN

Parameter	Value	Unit
(a) Manufacturer	Östberg	-
(b) Model code	HERU 200 T EC	-
(c) SEC value	-41.72	kWh/m <sup>2</sup>
SEC class	A	-
(d) Declared type	RVU / BVU	-
(e) Type of drive	Variable speed drive	-
(f) Type of heat recovery	Regenerative	-
(g) Thermal efficiency	86%	%
(h) Max. flow rate (@100Pa)	744	m <sup>3</sup> /h
(i) Power at max. flow rate	317	W
(j) Sound power level	45	dB LwA
(k) Reference flow rate	0.153	m <sup>3</sup> /s
(l) Reference pressure difference	50	Pa
(m) SPI	0.30	W/(m <sup>3</sup> /h)
(n) Type of control	Local demand control	-
(o) External (and internal) leakage rate	1.75 (2.51)	%
(p) Mixing rate	N/A	-
(q) Visual filter warning	In remote control	-
(r) Instruction supply/exhaust grilles	N/A	-
(s) Disassembly instructions	<a href="http://www.ostberg.com">www.ostberg.com</a>	-
(t) Airflow sensitivity	N/A	-
(u) Air tightness	N/A	m/s
(v) AEC	202	kWh
(w) AHS average	4637	kWh
AHS warmer	2097	kWh
AHS colder	9071	kWh

## WIRING DIAGRAM

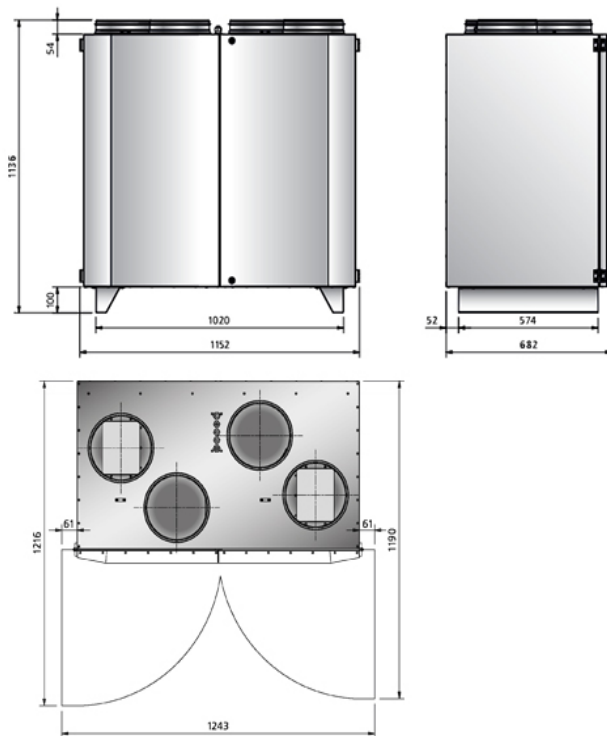
4040176



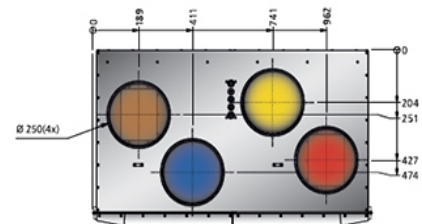
- Ⓜ = Fan Motor
- Ⓜ1 = Fan Motor
- Ⓜ2 = Fan Motor
- Ⓜ3 = Rotor Motor
- ① = Yellow/Green
- ② = Black
- ③ = Blue
- ④ = Brown
- ⑤ = White
- ⑥ = Orange
- ⑦ = Grey
- ⑧ = Red
- ⑨ = Green
- ⑩ = Violet
- ⑪ = Quick switch
- ⑫ = Yellow



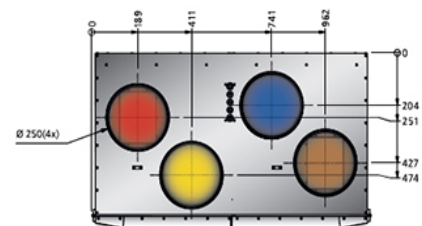
## DIMENSIONS



RIGHT-HAND DESIGN



LEFT-HAND DESIGN



### ENGLISH

- Supply air
- Extract air
- Exhaust air
- Fresh air
- ⊗ Cooker hood

### SVENSKA

- Tilluft
- Frånluft
- Avluft
- Uteluft
- ⊗ Spiskåpa

### DEUTSCH

- Zuluft
- Abluft
- Fortluft
- Frischluft
- ⊗ Dunstabzugshaube

### SUOMI

- Tuloilma
- Poistoilma
- Jäteilma
- Ulkoilma
- ⊗ Liesituuletin

### ITALIANO

- Aria di immissione
- Aria di estrazione
- Sfiato
- Aria esterna
- ⊗ Cappa cucina

### POLSKI

- Powietrze nawiew
- Powietrze wywiew
- Powietrze usuwane
- Powietrze z zewnątrz
- ⊗ Okapu kuchennego



## ACCESSORIES

### Electrical accessories



Humidity sensor RH



Carbon dioxide sensor CO2



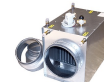
Room sensor



Pressure Sensor Kit



Heater Kit Water, HERU 200/250 T



Cooling coil Kit, HERU 200/250 T



Control Kit



Remote control



Remote control with Modbus



Control board



Antenna



Extension cable, antenna



Freeze protection sensor



Duct sensor



Damper motor



Relay pump control

### Mechanical accessories



Adjustable feet



Novibra Mat



Filter Kit HERU 200/250 T



Silencer LDC 250