



Fos - STOP

Chemical Dosing Unit and  
PAC Phosphorous Chemical

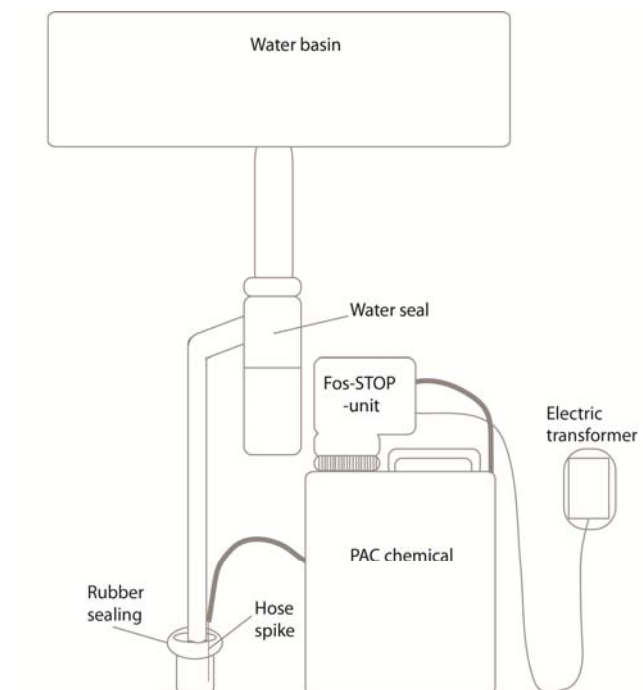
## Installation

Check that there is all the needed equipments in the package.

- 10 liters PAC chemical
- Dosing unit + electric transformer + dosing hose

Connect dosing unit to chemical can. Connect electric transformer to the unit and electrical network. Introductions for setting the right parameters on next pages.

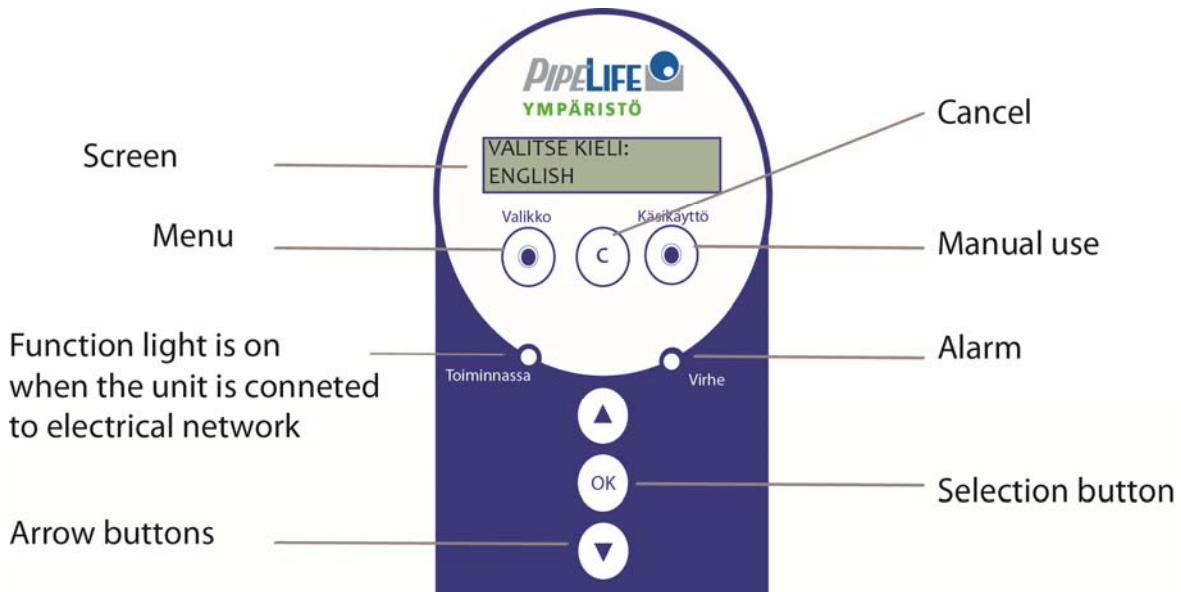
Fos – STOP dosing unit can be installed in water basin in toilet or kitchen. Install unit before water seal with sticking the hose spike between rubber sealing and plastic pipe.



## PAC Phosphorous Removing Chemical

Fos-STOP uses PAC phosphorous removing chemical (EKA WT 91). The same chemical is used in many water purification plants of municipalities. Use proper protection clothes when handling PAC chemical. Also take care that you don't get the chemical to your eyes. Proper protection clothes: Gloves, eye protection and breathing mask. If you get the chemical to your eyes flush them with lot of water and get to doctor.

# Fos - STOP Unit Settings



Do the following action when using Fos-STOP for the first time. (Parameters can be changed later using menu button.)

Select language:  
SUOMI / SVENSKA / ENGLISH.

VALITSE KIELI:  
ENGLISH

▲ ○ OK ○ ▼

Set time

SET TIME:  
12:40:45

▲ ○ OK ○ ▼

VALUE SET

Select the most suitable method to feed chemical (choose only one!):

- Inhabitants
- Water meter
- Water consumption

FEED METHOD

▲ ○ OK ○ ▼

Inhabitants  
(1-10):

FEED METHOD:  
INHABITANTS

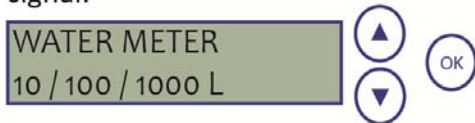
▲ ○ OK ○ ▼

FEED METHOD:  
EXTERNAL INPUT

▲ ○ OK ○ ▼

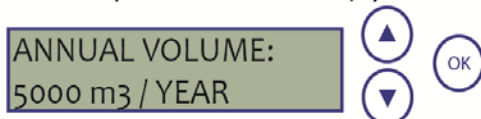
### Water meter:

Value depends on water meter signal. For 10 liter signal unit doses once for every 3 signals. For 100 or 1000 signals dosing for every signal.



### Annual volume:

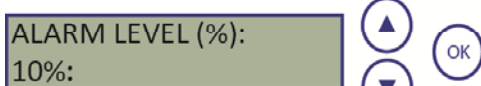
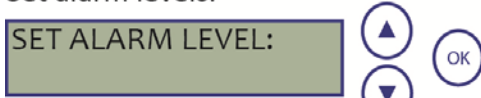
Consumption 0-10000 m<sup>3</sup> / year.



Chemical volume (litres)  
(1-99 liters, default can is 10 litres):

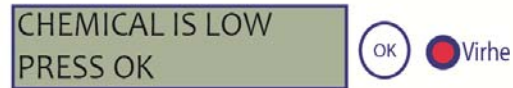


Set alarm levels.

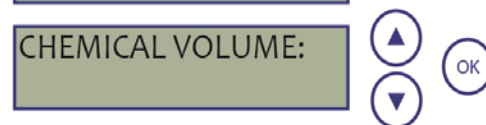
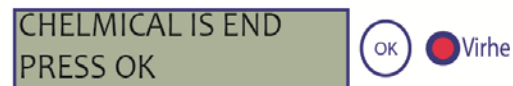


### ALARMS

When 10% of chemical is left  
led light flashes.



Device alarms until press OK.  
Set chemical volume after  
filling new chemical.



Alarm for full septic tank  
(every 150m<sup>3</sup> used water).



### RESET:

Unplug the electric cable and press C and both arrow buttons at the same time. Plug electric on and set values.

Pipelife contact information:

ymparisto@pipelife.fi

puh: +358 (0) 30 600 2220 / fax:+358 (0)30 600 2221