

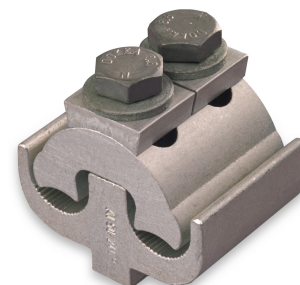
ENSTO

SL8.21

Hargnemisklemm

Tüüp SL8.21
 GTIN 6418677403781
 Nimi Hargnemisklemm
 Al 50-240 mm² ja Al 50-240 mm²
 Kirjeldus Klemm SL 8.21 on puhastatud ja määritud, seepärast tuleb enne paigaldamist puhastada ainult juhtmete otsad. Klemmil on kaks M10 polti

Müüja



Spetsifikatsioon

Certificates

Standards: IEC 61284

Features

Bolt: 2xM10

Plastikkate: SP16

Dimensions

Hargnevjuhe mm²: Al 50-240

Magistraaljuhe mm²: Al 50-240

Juhtme diameeter: 7,70 ... 20,00 mm

Kaal: 0,29 kg

ETIM

Etim

Surface protection: Bare

Clamping channel opening branch conductor: Both sides open

Material branch conductor: Aluminium

Clamping channel opening main conductor: Both sides open

Type of connection: Screwed connection

Material main conductor: Aluminium

Nominal cross section branch conductor SM/RM:	50,00 ... 240,00 mm ²
etim7.EF00965:	50,00 ... 240,00 mm ²
Nominal cross section branch conductor SE/RE:	50,00 ... 240,00 mm ²
Nominal cross section main conductor SM:	50,00 ... 240,00 mm ²
Terminal insulated:	False

Packaging

Pallet package

Unit:	pcs
Package size:	1750
Depth:	1200,00 mm
Width:	800,00 mm
Height:	890,00 mm

Default package

Unit:	pcs
Package size:	25
Depth:	218,00 mm
Width:	218,00 mm
Height:	176,00 mm
Volume:	8,36 l