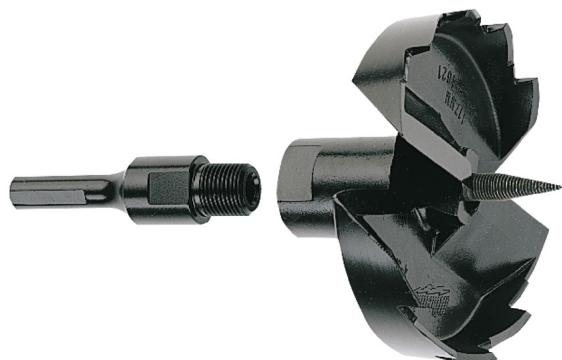


SFD 76 mm - 1 pc | Large selffeed bits

- Large selffeed bits in 76, 92 and 116 mm sizes have double internal cutter blades that shave hole radius for clean, smooth holes without pressure.
- Replaceable arbor.



SFD 76 mm - 1 pc	
Collet capacity (mm)	76
Diameter (mm)	76
Pack quantity	1
Shank reception	3 milled flats