

**TOPE PRO  
MORA**



MORA95_SU_W_70W_LED_6650DIM	IP20	IK03		CE	
-----------------------------	------	------	--	----	--

**TopE article** 6004100031

**Data sheet**

**DIMMABLE**

A versatile, circular luminaire for surface mounting, with the option of choosing a color temperature from 3000 to 4000K Electronic, fixed output control gear. Class I electrical, IP20. Body: steel, white (RAL 9016). Diffuser: acrylic opal. Connection via push wire terminal blocks. Supplied with adjustable wire suspension mounting, with quick-locks included. Complete with 3000 - 4000K LED.



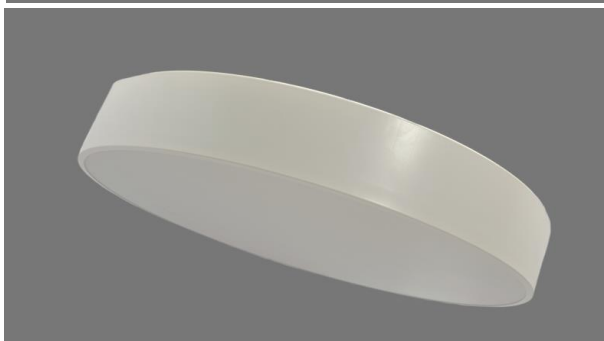
Dimensions: Ø800x90mm

Total power: 67,9W

Luminaire luminous flux: 6637 lm

Luminaire efficiency: 97,75 lm/W

Weight: 5,2 kg



Light source: LED

Color rendering index min.: >80

Correlated colour temperature: 3000 - 4000 Kelvin

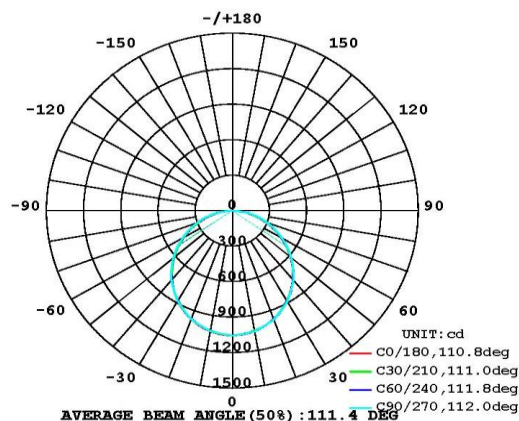
Rated median usefull life: 50000 L90 25°C

Ballast: Zx HS

Luminaire input power: 80W

Dimming: Dimmable to 1%

All values are rated values. TopE Lighting uses tried and tested components from leading suppliers, however there may be isolated instances of technology-related failures of individual LEDs during the rated product lifetime. International standards set the tolerance in initial flux and connected load at ±10%. Colour temperature is subject to a tolerance of up to +/-150 Kelvin from the nominal value. Unless stated otherwise, the values apply to an ambient temperature of 25°C. In most products the failure of one LED point causes no functional impairment to the lighting performance of the luminaire and is therefore no reason for complaint



TopE Lighting is constantly developing and improving its products. The right is reserved to change specifications

without prior notification or public announcement.

© TopE Lighting