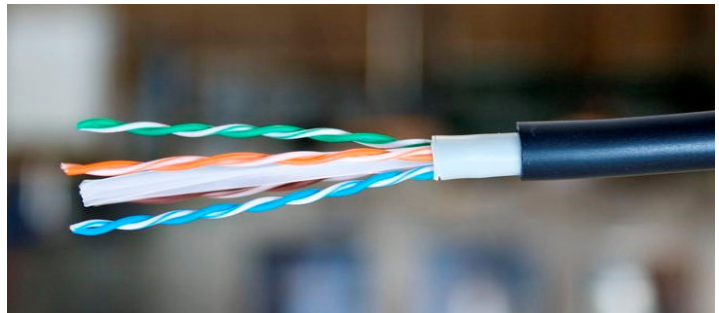
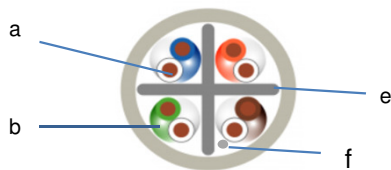




## Kerman Horizontal Cable U/UTP - 100 Ohms - Category 6 - 4 pair Outdoor, PE, CPR-Fca

High speed data transmission cables for backbone distribution local computer networks, supported by the class E and for use at frequencies of up to 250 MHz.



## Design & Materials

Conductor Material:	(a)	Bare solid copper
Conductor Size:		23 AWG
Conductor Construction:		Solid
Insulation Material:	(b)	HDPE
Insulation O.D.:		1.02 ± 0,04 mm
Color code:		Per TIA/EIA 568-B
Total number of wires:	(c)	4 pair
Outer Jacket Color:	(d)	Black
Marking:		Length (m)
Star shaped central filler	(e)	
Rip-cord	(f)	

**General Construction:** The cable contains 4 Unshielded Twisted Pairs (UTP) cabled with a special star shaped central filler, rip-cord and jacketed with PE compound.

**Outer Jacket Material:** PE  
**Outer Diameter:** 6.2 mm nom.  
**Weight:** 45 kg/km

**Applications:** Outdoor use, fixed installations  
High bandwidth digital applications with low BER, High data rates

## Electrical Properties: Cat. 6 Un-screened Pair Horizontal Cables

Freq. MHz	Attenuation dB/100m		PS NEXT Loss / dB		NEXT Loss DB		RL /dB		PS ELFEXT / dB		ELFEXT / dB	
	Typical	CAT6	Typical	CAT6	Typical	CAT6	Typical	CAT6	Typical	CAT6	Typical	CAT6
1	2,0	2,8	75,0	72,3	78,0	75,3	22,0	20,0	90,0	65,0	93,0	68,0
4	3,7	3,8	66,0	63,3	69,0	66,3	25,0	23,0	90,0	53,0	93,0	56,0
10	5,7	6,0	60,0	57,3	63,0	60,4	28,0	25,0	80,0	45,0	83,0	48,0
20	8,1	8,5	56,0	52,8	59,0	55,8	28,0	25,0	80,0	39,0	83,0	42,0
30	10,0	10,5	53,0	50,1	56,0	53,1	27,0	23,8	70,0	35,5	73,0	28,5
100	19,0	19,9	44,0	42,3	48,0	45,3	24,0	21,1	63,0	25,0	66,0	28,0
150	23,6	24,9	43,0	39,7	46,0	42,7	22,0	18,8	60,0	21,5	63,0	24,5
200	27,7	29,1	41,0	37,8	44,0	40,8	21,0	18,0	58,0	19,0	61,0	22,0
250	31,4	33,0	38,0	36,3	41,0	39,3	20,0	17,3	55,0	17,0	58,0	20,0

Cables meet the minimum Cat. 6 transmission requirements as per IEC 61156-5 Ed. 2

## Performance

Frequency Range:	1 - 250 MHz
Impedance:	100 Ω
Coupling Attenuation:	Type III
DC Resistance:	95 Ω/km nom.
Max. Resistance Unbalance:	2 %
Capacitance Unbalance:	1.2 pF/m max.
Velocity of Propagation:	68 % nom.
Propagation Delay Skew:	35 ns/100m max.
Dielectric Strength:	700 V/minute
Min. Insulation Resistance :	5 GΩ•km
Max. Tensile Strength -	100 N
Min. Bend Radius:	50 mm

CPR Fca

Standards: IEC 61156, ISO/IEC 11801, TIA/EIA-568  
 Flamability Rating: IEC 60332-1, IEC 60754, IEC 61034

## Cables information

Reference	Jacket	Pairs AWG23	Max Diameter	Wteight / km	kg	Drum size	m
S207027	PE	4	6,2	45		500	