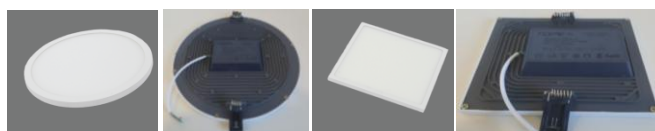


„SPLIT“ LED PANEL



Model No: SPLIT80_R_5W_LED_355	Article: 6003000017	Model No: SPLIT80_S_5W_LED_355	Article: 6003000023
SPLIT80_R_8W_LED_570	6003000018	SPLIT80_S_8W_LED_570	6003000024
SPLIT80_R_16W_LED_1280	6003000020	SPLIT80_S_16W_LED_1280	6003000026
SPLIT80_R_22W_LED_1760	6003000021	SPLIT80_S_22W_LED_1760	6003000027
SPLIT80_R_30W_LED_2400	6003000022	SPLIT80_S_30W_LED_2400	6003000028

EN

Instalation & Operating Instruction

1. Designated Use

- SPLIT LED panels are an indoor use luminaire, which could be used for wet rooms as well.
- Mainly for recessed installation
- Suitable for a wide range of locations: offices, living rotoms, corridors, staircases, bathrooms, garages etc.

⚠ WARNING

2. Basic Safety Instruction

Danger of death through electric shock

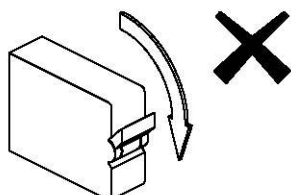
- Must only be installed by qualified electricians.
- Conforms to the latest EC directives.
- Designed for use in normal environments.

IMPORTANT

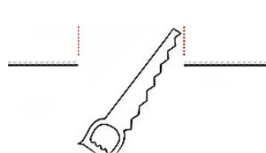
Switch off the electricity at the fuse box by removing the relevant fuse or switching off the circuit breaker before proceeding with the installation

3. Installation Procedure:

1. Switch off the power.



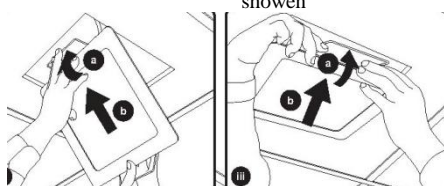
2. Cut the hole in the ceiling



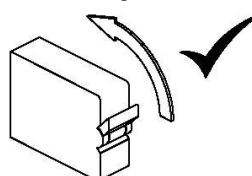
3. Connect LED panel wires to the grid.



4. Put the panel into the hole as it is shown



5. Switch on the power



Technical specification

Energy Efficiency	Class A+
Power Supply	220-240V 50Hz
Power Factor	>0.90
Colour Temperature	4000K
Colour Rendering Index	>80
Lumen Output Initial	SPLIT80_R_5W_LED_355; SPLIT80_S_5W_LED_355 - 325 lm SPLIT80_R_8W_LED_570; SPLIT80_S_8W_LED_570 - 461 lm SPLIT80_R_16W_LED_1280; SPLIT80_S_16W_LED_1280 - 1168 lm SPLIT80_R_22W_LED_1760; SPLIT80_S_22W_LED_1760 - 1772 lm SPLIT80_R_30W_LED_2400; SPLIT80_S_30W_LED_2400 - 2400 lm
Lamp beam angle	120 degrees
Environmental Protection	IP44 (suitable for indoor and wet rooms)
EC Directives	Conforms to current EC Directives
Warranty	36 Months