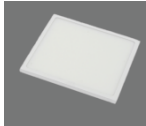


# „DAKA“ LED PANEL



Model No. DAKA80\_36W\_LED\_2880, Article 6003000011  
 Model No. DAKA80\_42W\_LED\_3440, Article 6003000012  
 Model No. DAKA100\_36W\_LED\_3620, Article 6003000013  
 Model No. DAKA100\_42W\_LED\_4540, Article 6003000014

EN

## Installation & Operating Instruction

### 1. Designated Use

- DAKA LED panels are an indoor use luminaire for recessed installation in to gypsum or „Armstrong“ type ceiling. Also can be used as surface mounting panel together with DAKA\_SF\_M\_K\_600 surface mounting kit.
- Suitable for a wide range of locations: offices, living rooms, corridors, staircases etc.

### ⚠ WARNING

### 2. Basic Safety Instruction

Danger of death through electric shock

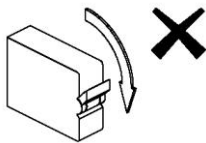
- Must only be installed by qualified electricians.
- Conforms to the latest EC directives.
- Designed for use in normal environments.

### \*\*\*IMPORTANT\*\*\*

**Switch off the electricity at the fuse box by removing the relevant fuse or switching off the circuit breaker before proceeding with the installation**

### 3. Installation Procedure:

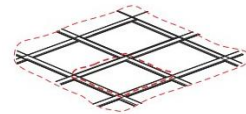
1. Switch off the power.



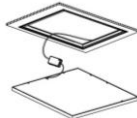
2. For gypsum ceiling, cut the hole



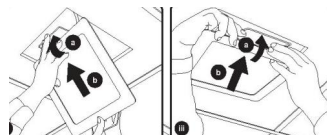
3. For „Armstrong“ ceiling, move away ceiling plaster slab.



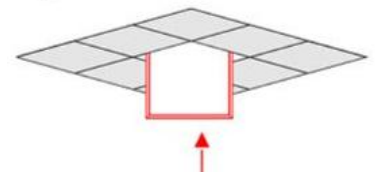
4. Connect driver to wire and to the LED panel.



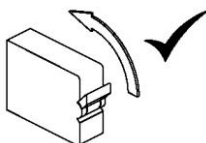
5. For gypsum ceiling, screw springs to the panel and put the panel into the hole



6. For „Armstrong“ ceiling, put panel inside the hole.



7. Switch on the power



### Technical specification

Energy Efficiency	Class A+
Power Supply	220-240V 50Hz
Power Factor	>0.90
Colour Temperature	4000K
Colour Rendering Index	>80
Lumen Output Initial	DAKA80_36W_LED_2880 - 2880 lm / DAKA100_36W_LED_3620 – 3779 lm DAKA80_42W_LED_3440 - 3440 lm / DAKA100_42W_LED_4540 – 4245 lm
Lamp beam angle	110-120 degrees
Environmental Protection	IP44 from bellow, IP40 from above
EC Directives	Conforms to current EC Directives
Warranty	36 Months