

Victaulic® FireLock™ Installation-Ready™ Fittings No. 101, 102, 103, 104, 143



No. 101



No. 102



No. 103



No. 104



No. 143

1.0 PRODUCT DESCRIPTION

Application

- Patented *Installation-Ready* Fittings for Fire Protection Systems.

Available Sizes

- 1 ¼ – 2 ½"/DN32-DN65.
- 1" *FireLock IGS™* *Installation-Ready* Fittings available. See [publication 10.54](#).

Pipe Material

- Schedule 10, Schedule 40 or specialty carbon steel pipe listed in Section 5. For use with alternative materials and wall thicknesses please contact Victaulic.
- For exceptions reference section 6.0 Notifications

Maximum Working Pressure

- Up to 365 psi/2517 kPa/25 bar.

Pipe Preparation

- Roll Grooved, Cut Grooved.

2.0 CERTIFICATION/LISTINGS



ALWAYS REFER TO ANY NOTIFICATIONS AT THE END OF THIS DOCUMENT REGARDING PRODUCT INSTALLATION, MAINTENANCE OR SUPPORT.

3.0 SPECIFICATIONS - MATERIAL

Fitting Housing: Ductile iron conforming to ASTM A536, Grade 65-45-12

Housing Coating: (specify choice)

Orange coating.

Red coating (standard for EMEA-I and Asia Pacific).

Optional: Hot dipped galvanized.

Gasket:

Grade “E” EPDM (Type A) Vic-Plus™ Pre-lubricated Gasket

EPDM (Violet Color Code). Applicable for wet and dry (oil-free air) fire protection systems only. Listed/Approved for continuous use in wet and dry systems. Listed/Approved for dry systems at -40°F/-40°C and above. Not compatible for use with hot water services or steam services.

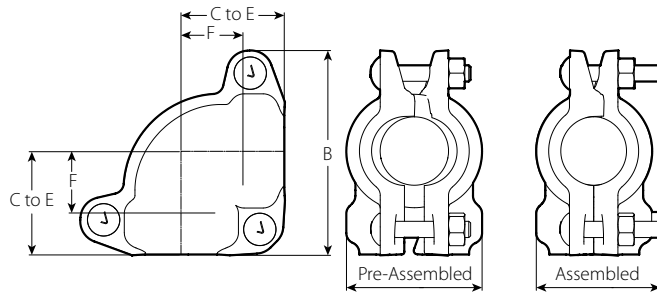
NOTES

- Reference should always be made to [publication I-100](#), Victaulic Field Installation Handbook for gasket lubrication instructions.
- Services listed are General Service Guidelines only. It should be noted that there are services for which these gaskets are not compatible. Reference should always be made to [publication 05.01](#), Victaulic Gasket Selection Guide for specific gasket service guidelines and for a listing of services which are not compatible.

Bolts/Nuts: Carbon steel oval neck track bolts meeting the mechanical property requirements of ASTM A449 (imperial) and ISO 898-1 Class 9.8 (M10-M16) Class 8.8 (M20 and greater). Carbon steel hex nuts meeting the physical and chemical requirements of ASTM A563 Grade B (imperial) and ASTM A563M Class 9 (metric). Track bolts and hex nuts are zinc electroplated per ASTM B633 Fe/Zn 5, finish Type III (imperial) or Type II (metric).

4.0 DIMENSIONS

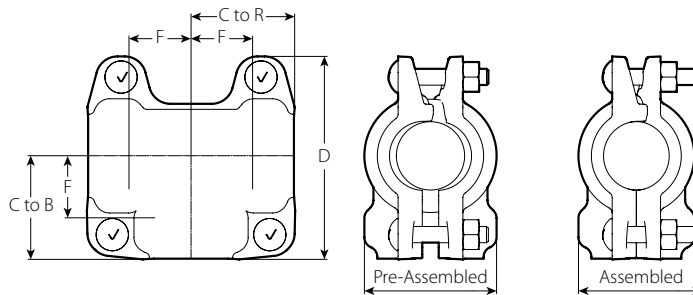
No. 101 Installation-Ready 90° Elbow



| Size | | Bolt/Nut | | Dimensions | | | | | Weight | |
|--------------|-------------------------|----------|-------------------------|--------------|--------------|--------------|---------------|--------------|--------------------|--|
| Nominal | Actual Outside Diameter | Qty. | Size | F Take Out | C to E | B | Pre-Assembled | Assembled | Approximate (Each) | |
| inches DN | inches mm | | inches mm | inches mm | inches mm | inches mm | inches mm | inches mm | lb kg | |
| 1 ¼ DN32 | 1.660 42.4 | 3 | ¾ x 2 M10 x 50 | 1.50 38 | 2.44 62 | 4.75 121 | 3.19 81 | 2.88 73 | 3.2 1.4 | |
| 1 ½ DN40 | 1.900 48.3 | 3 | ¾ x 2 M10 x 50 | 1.56 40 | 2.56 65 | 5.00 127 | 3.50 89 | 3.06 78 | 3.7 1.7 | |
| 2 DN50 | 2.375 60.3 | 3 | 7/16 x 2.75 M11 x 69 | 1.88 48 | 2.81 71 | 5.63 143 | 4.19 106 | 3.63 92 | 5.4 2.5 | |
| 2 ½ | 2.875 73.0 | 3 | 7/16 x 2.75 M11 x 69 | 2.13 54 | 3.06 77 | 6.13 156 | 4.63 118 | 4.06 103 | 6.4 2.9 | |
| DN65 | 3.000 76.1 | 3 | 7/16 x 2.75 M11 x 69 | 2.19 56 | 3.13 80 | 6.19 157 | 4.75 121 | 4.19 106 | 6.6 3.0 | |

4.1 DIMENSIONS

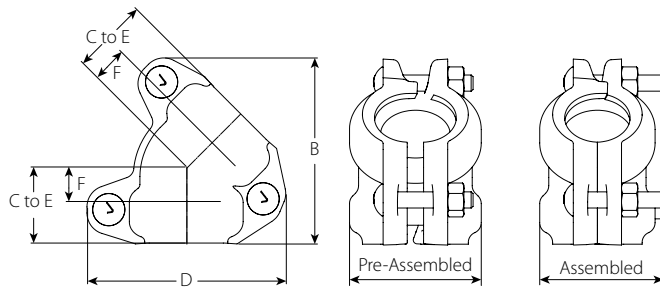
No. 102 Installation-Ready Tee



| Size | | Bolt/Nut | | Dimensions | | | | | Weight | |
|--------------|-------------------------|----------|-------------------------|--------------|--------------|--------------|--------------|---------------|--------------|--------------------|
| Nominal | Actual Outside Diameter | Qty. | Size | F Take Out | C to B | C to R | D | Pre-Assembled | Assembled | Approximate (Each) |
| inches DN | inches mm | | inches mm | inches mm | inches mm | inches mm | inches mm | inches mm | inches mm | lb kg |
| 1 ¼ DN32 | 1.660 42.4 | 4 | ¾ x 2 M10 x 50 | 1.50 38 | 2.44 62 | 2.44 62 | 4.75 121 | 3.19 81 | 2.88 73 | 4.2 1.9 |
| 1 ½ DN40 | 1.900 48.3 | 4 | ¾ x 2 M10 x 50 | 1.56 40 | 2.56 65 | 2.56 65 | 5.00 127 | 3.50 89 | 3.06 78 | 4.6 2.1 |
| 2 DN50 | 2.375 60.3 | 4 | 7/16 x 2.75 M11 x 69 | 1.88 48 | 2.88 73 | 2.88 73 | 5.50 140 | 4.19 106 | 3.63 92 | 6.4 2.9 |
| 2 ½ | 2.875 73.0 | 4 | 7/16 x 2.75 M11 x 69 | 2.13 54 | 3.13 80 | 3.13 80 | 6.00 152 | 4.63 118 | 4.06 103 | 7.5 3.4 |
| DN65 | 3.000 76.1 | 4 | 7/16 x 2.75 M11 x 69 | 2.19 56 | 3.19 81 | 3.19 81 | 6.19 157 | 4.75 121 | 4.19 106 | 7.8 3.5 |

4.2 DIMENSIONS

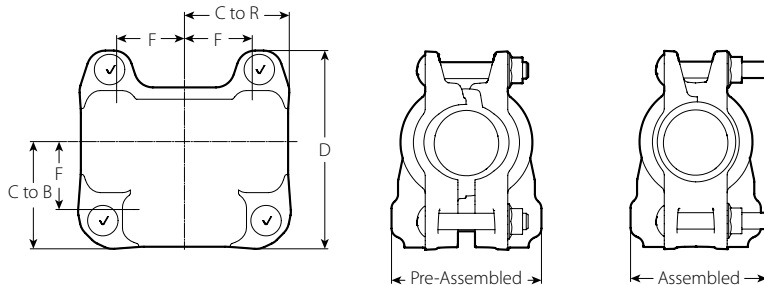
No. 103 Installation-Ready 45° Elbow



| Size | | Bolt/Nut | | Dimensions | | | | | | Weight | |
|-------------------------|---|----------|-------------------------|-------------------------------|------------------------|-------------------|-------------------|-----------------------------------|---------------------------|-----------------------------------|--|
| Nominal inches DN | Actual Outside Diameter inches mm | Qty. | Size inches mm | F Take Out inches mm | C to E inches mm | B inches mm | D inches mm | Pre- Assembled inches mm | Assembled inches mm | Approximate (Each) lb kg | |
| 1 ¼ DN32 | 1.660 42.4 | 3 | ¾ x 2 M10 x 50 | 0.81 21 | 1.81 46 | 4.38 111 | 4.69 119 | 3.19 81 | 2.88 73 | 2.8 1.3 | |
| 1 ½ DN40 | 1.900 48.3 | 3 | ¾ x 2 M10 x 50 | 0.94 24 | 1.88 48 | 4.50 114 | 4.81 122 | 3.44 87 | 3.06 78 | 3.1 1.4 | |
| 2 DN50 | 2.375 60.3 | 3 | 7/16 x 2.75 M11 x 69 | 1.00 25 | 2.00 51 | 5.00 127 | 5.44 138 | 4.19 106 | 3.63 92 | 4.4 2.0 | |
| 2 ½ DN65 | 2.875 73.0 | 3 | 7/16 x 2.75 M11 x 69 | 1.13 29 | 2.06 52 | 5.38 135 | 5.94 151 | 4.63 117 | 4.06 103 | 4.9 2.2 | |
| | 3.000 76.1 | 3 | 7/16 x 2.75 M11 x 69 | 1.13 29 | 2.13 54 | 5.50 140 | 6.13 156 | 4.75 121 | 4.19 106 | 5.1 2.3 | |

4.3 DIMENSIONS

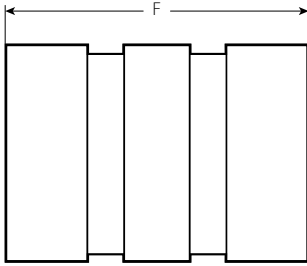
No. 104 Installation-Ready Bullhead Tee



| Size | | Bolt/Nut | | Dimensions | | | | | Weight | |
|---|---|----------|-------------------------|-------------------------------|------------------------|------------------------|-------------------|-----------------------------------|---------------------------|-------------------------------|
| Nominal inches DN | Actual Outside Diameter inches mm | Qty. | Size inches mm | F Take Out inches mm | C to B inches mm | C to R inches mm | D inches mm | Pre- Assembled inches mm | Assembled inches mm | Approx. (Each) lb kg |
| 1 ½ x 1 ½ x 2 DN40 x DN40 x DN50 | 1.900 x 1.900 x 2.375 48.3 x 48.3 x 60.3 | 4 | 7/16 x 2.75 M11 x 69 | 1.88 48 | 2.88 73 | 2.88 73 | 5.38 137 | 4.13 105 | 3.75 95 | 7.0 3.2 |
| 2 x 2 x 2 ½ DN50 x DN50 x 73.0 mm | 2.375 x 2.375 x 2.875 60.3 x 60.3 x 73.0 | 4 | 7/16 x 2.75 M11 x 69 | 2.13 54 | 3.13 79 | 3.13 79 | 5.88 149 | 4.63 117 | 4.13 105 | 8.6 3.9 |
| 2 ½ x 2 ½ x 3 73.0 mm x 73.0 mm x DN80 | 2.875 x 2.875 x 3.500 73.0 x 73.0 x 88.9 | 4 | 7/16 x 2.75 M11 x 69 | 2.38 60 | 3.50 89 | 3.50 89 | 6.50 165 | 5.25 133 | 4.75 121 | 10.8 4.9 |

4.4 DIMENSIONS

No. 143 Close Nipple (fitting to fitting connections)



| Size | | Dimensions | Weight |
|--------------|-------------------------|--------------|--------------------|
| Nominal | Actual Outside Diameter | Takeout F | Approximate (Each) |
| inches DN | inches mm | inches mm | lb kg |
| 1 ¼ | 1.660 | 2.37 | 0.4 |
| DN32 | 42.4 | 60 | 0.2 |
| 1 ½ | 1.900 | 2.37 | 0.5 |
| DN40 | 48.3 | 60 | 0.2 |
| 2 | 2.375 | 2.37 | 0.7 |
| DN50 | 60.3 | 60 | 0.3 |
| 2 ½ | 2.875 | 2.37 | 1.1 |
| | 73.0 | 60 | 0.5 |
| DN65 | 3.000 | 2.37 | 1.2 |
| | 76.1 | 60 | 0.5 |

5.0 PERFORMANCE

Friction Flow Data

| Size | | Flow Data – Frictional Resistance Equivalent Length of Sch. 40 Pipe (C=120) | | | | |
|-------------------------|---|--|---------------------------------|-------------------------|----------------|-------------------------|
| | | Elbows | | No. 102 Straight Tee | | No. 104 Bullhead Tee |
| Nominal inches DN | Actual Outside Diameter inches mm | No. 101 90° Elbow ft m | No. 103 45° Elbow ft m | Branch ft m | Run ft m | Run ft m |
| 1 ¼ DN32 | 1.660 42.4 | 2.8 0.9 | 0.4 0.1 | 3.1 0.9 | 0.6 0.2 | – |
| 1 ½ DN40 | 1.900 48.3 | 2.9 0.9 | 0.6 0.2 | 4.0 1.2 | 0.7 0.2 | 6.8 2.1 |
| 2 DN50 | 2.375 60.3 | 3.0 0.9 | 1.1 0.3 | 5.8 1.8 | 1.1 0.3 | 8.4 2.6 |
| 2 ½ | 2.875 73.0 | 3.1 0.9 | 1.5 0.5 | 7.6 2.3 | 1.4 0.4 | 9.3 2.8 |
| DN65 | 3.000 76.1 | 3.1 0.9 | 1.6 0.5 | 8.1 2.5 | 1.5 0.5 | – |

Maximum Working Pressure

Style 101, 102, 103

| Size | | cULus | | FM | | Vds | LPCB |
|-------------------------|---|--------------------------|----------------------|----------------------|----------------------|-------------|-------------|
| Nominal inches DN | Actual Outside Diameter inches mm | Sch.10 psi kPa | Sch.40 psi kPa | Sch.10 psi kPa | Sch.40 psi kPa | psi kPa | psi kPa |
| 1 ¼ DN32 | 1.660 42.4 | 300 2068 | 300 2068 | 365 2517 | 365 2517 | 363 2500 | 363 2500 |
| 1 ½ DN40 | 1.900 48.3 | 300 2068 | 300 2068 | 365 2517 | 365 2517 | 363 2500 | 363 2500 |
| 2 DN50 | 2.375 60.3 | 300 2068 | 300 2068 | 365 2517 | 365 2517 | 363 2500 | 363 2500 |
| 2 ½ | 2.875 73.0 | 300 2068 | 300 2068 | 365 2517 | 365 2517 | 363 2500 | 363 2500 |
| DN65 | 3.000 76.1 | 300 ¹ 2068 | – | 365 2517 | – | – | 363 2500 |

¹ cULus Listed for EN 10217 2.9mm pipe wall

Style 104

| Size | | cULus | | FM | |
|---|---|----------------------|----------------------|----------------------|----------------------|
| Nominal inches DN | Actual Outside Diameter inches mm | Sch.10 psi kPa | Sch.40 psi kPa | Sch.10 psi kPa | Sch.40 psi kPa |
| 1 ½ x 1 ½ x 2 DN40 x DN40 x DN50 | 1.900 x 1.900 x 2.375 48.3 x 48.3 x 60.3 | 300 2068 | 300 2068 | 365 2512 | 365 2512 |
| 2 x 2 x 2 ½ DN50 X DN50 X 73.0 mm | 2.375 x 2.375 x 2.875 60.3 x 60.3 x 73.0 | 300 2068 | 300 2068 | 365 2512 | 365 2512 |
| 2 ½ X 2 ½ X 3 73.0 mm x 73.0 mm x DN80 | 2.875 x 2.875 x 3.500 73.0 x 73.0 x 88.9 | 300 2068 | 300 2068 | 365 2512 | 365 2512 |

5.1 PERFORMANCE

Listing/Approvals

Specialty Pipe

Style 101

| Pipe | Sizes inches DN | Max Working Pressure | |
|---------|-----------------------------|----------------------|------------------|
| | | cULus psi kPa | FM psi kPa |
| ET40 | 1 – 2 DN25 – DN50 | – | 300 2068 |
| MT | 1 – 2 DN25 – DN50 | 300 2068 | 300 2068 |
| MLT | 1 – 2 DN25 – DN50 | 300 2068 | 300 2068 |
| EZT | 1 – 2 DN25 – DN50 | – | 300 2068 |
| EZF | 1 ¼ – 2 ½ DN32 – 73.0 mm | – | 300 2068 |
| TF | 1 ¼ – 2 ½ DN32 – 73.0 mm | – | 300 2068 |
| MF | 1 ¼ – 2 ½ DN32 – 73.0 mm | 300 2068 | 300 2068 |
| FF | 1 ½ – 2 ½ DN40 – 73.0 mm | 300 2068 | 300 2068 |
| EF | 1 – 2 DN25 – DN50 | – | 300 2068 |
| | 1 ¼ – 2 ½ DN32 – 73.0 mm | 300 2068 | – |
| EN10217 | DN65 | 300 2068 | – |

NOTES

- ET40: Bull Moose Tube EDDY-Thread Threadable Thinwall Sprinkler Pipe
- MT: For Use with Wheatland Tube Mega-Thread Threadable Thinwall Sprinkler Pipe
- MLT: For use with Wheatland Tube MLT Threadable Thinwall Sprinkler Pipe
- EZT: For use with Youngstown Tube EZ-Thread Threadable Thinwall Sprinkler Pipe
- EZF: For use with Bull Moose Tube EDDY-Flow Non-Threadable Lightwall Sprinkler Pipe
- TF: For use with Tex-Tube Tex Flow Non-Threadable Lightwall Sprinkler Pipe
- MF: For use with Wheatland Tube Mega-Flow Non-Threadable Lightwall Sprinkler Pipe
- FF: For use with Youngstown Tube Fire-Flo Non-Threadable Lightwall Sprinkler Pipe
- EF: For use with Borusan Mannesmann Easy-Flow Non-Threadable Lightwall Sprinkler Pipe
- EN10217: refers to steel pipe manufactured in accordance with EN10217.

5.1 PERFORMANCE (CONTINUED)

Style 102

| Pipe | Sizes inches DN | Max Working Pressure | |
|---------|-----------------------------|----------------------|------------------|
| | | cULus psi kPa | FM psi kPa |
| ET40 | 1 – 2 DN25 – DN50 | – | 300 2068 |
| MT | 1 – 2 DN25 – DN50 | – | 300 2068 |
| MLT | 1 – 2 DN25 – DN50 | 300 2068 | 300 2068 |
| EZT | 1 – 2 DN25 – DN50 | – | 300 2068 |
| EZF | 1 ¼ – 2 ½ DN32 – 73.0 mm | – | 300 2068 |
| TF | 1 ¼ – 2 ½ DN32 – 73.0 mm | – | 300 2068 |
| MF | 1 ¼ – 2 ½ DN32 – 73.0 mm | 300 2068 | 300 2068 |
| FF | 1 ½ – 2 ½ DN40 – 73.0 mm | 300 2068 | 300 2068 |
| EF | 1 – 2 DN25 – DN50 | – | 300 2068 |
| | 1 ¼ – 2 ½ DN32 – 73.0 mm | 300 2068 | – |
| EN10217 | DN65 | 300 2068 | – |

NOTES

- ET40: Bull Moose Tube EDDY-Thread Threadable Thinwall Sprinkler Pipe
- MT: For Use with Wheatland Tube Mega-Thread Threadable Thinwall Sprinkler Pipe
- MLT: For use with Wheatland Tube MLT Threadable Thinwall Sprinkler Pipe
- EZT: For use with Youngstown Tube EZ-Thread Threadable Thinwall Sprinkler Pipe
- EZF: For use with Bull Moose Tube EDDY-Flow Non-Threadable Lightwall Sprinkler Pipe
- TF: For use with Tex-Tube Tex Flow Non-Threadable Lightwall Sprinkler Pipe
- MF: For use with Wheatland Tube Mega-Flow Non-Threadable Lightwall Sprinkler Pipe
- FF: For use with Youngstown Tube Fire-Flo Non-Threadable Lightwall Sprinkler Pipe
- EF: For use with Borusan Mannesmann Easy-Flow Non-Threadable Lightwall Sprinkler Pipe
- EN10217: refers to steel pipe manufactured in accordance with EN10217.

5.1 PERFORMANCE (CONTINUED)

Style 103

| Pipe | Sizes inches DN | Max Working Pressure | |
|---------|-----------------------------|----------------------|------------------|
| | | cULus psi kPa | FM psi kPa |
| ET40 | 1 ¼ – 2 ½ DN32 – 73.0 mm | – | 300 2068 |
| MT | 1 ¼ – 2 ½ DN32 – 73.0 mm | – | 300 2068 |
| MLT | 1 ¼ – 2 ½ DN32 – 73.0 mm | – | 300 2068 |
| | 1 ¼ – 2 DN32 – DN50 | 300 2068 | – |
| EZT | 1 ¼ – 2 ½ DN32 – 73.0 mm | – | 300 2068 |
| EZF | 1 ¼ – 2 ½ DN32 – 73.0 mm | – | 300 2068 |
| TF | 1 ¼ – 2 ½ DN32 – 73.0 mm | – | 300 2068 |
| MF | 1 ¼ – 2 ½ DN32 – 73.0 mm | 300 2068 | 300 2068 |
| FF | 1 ½ – 2 ½ DN40 – 73.0 mm | 300 2068 | 300 2068 |
| EF | 1 – 2 DN25 – DN50 | – | 300 2068 |
| | 1 ¼ – 2 ½ DN32 – 73.0 mm | 300 2068 | – |
| EN10217 | DN65 | 300 2068 | – |

NOTES

- ET40: Bull Moose Tube EDDY – Thread Threadable Thinwall Sprinkler Pipe
- MT: For Use with Wheatland Tube Mega – Thread Threadable Thinwall Sprinkler Pipe
- MLT: For use with Wheatland Tube MLT Threadable Thinwall Sprinkler Pipe
- EZT: For use with Youngstown Tube EZ – Thread Threadable Thinwall Sprinkler Pipe
- EZF: For use with Bull Moose Tube EDDY – Flow Non – Threadable Lightwall Sprinkler Pipe
- TF: For use with Tex – Tube Tex Flow Non – Threadable Lightwall Sprinkler Pipe
- MF: For use with Wheatland Tube Mega – Flow Non – Threadable Lightwall Sprinkler Pipe
- FF: For use with Youngstown Tube Fire – Flo Non – Threadable Lightwall Sprinkler Pipe
- EF: For use with Borusan Mannesmann Easy – Flow Non – Threadable Lightwall Sprinkler Pipe
- EN10217: refers to steel pipe manufactured in accordance with EN10217.

5.1 PERFORMANCE (CONTINUED)

Style 104


| Pipe | Sizes inches DN | Max Working Pressure | |
|------|--|----------------------|------------------|
| | | cULus psi kPa | FM psi kPa |
| ET40 | 1 1/2 x 1 1/2 x 2, 2 x 2 x 2 1/2, 2 1/2 x 2 1/2 x 3 DN40 x DN40 x DN50, DN50 x DN50 x 73.0 mm, 73.0 mm x 73.0 mm x DN80 | – | 300 2068 |
| | 1 1/2 x 1 1/2 x 2, 2 x 2 x 2 1/2 DN40 x DN40 x DN50, DN50 x DN50 x 73.0 mm | 300 2068 | – |
| MT | 1 1/2 x 1 1/2 x 2, 2 x 2 x 2 1/2, 2 1/2 x 2 1/2 x 3 DN40 x DN40 x DN50, DN50 x DN50 x 73.0 mm, 73.0 mm x 73.0 mm x DN80 | – | 300 2068 |
| | 1 1/2 x 1 1/2 x 2, 2 x 2 x 2 1/2 DN40 x DN40 x DN50, DN50 x DN50 x 73.0 mm | 300 2068 | – |
| MLT | 1 1/2 x 1 1/2 x 2, 2 x 2 x 2 1/2, 2 1/2 x 2 1/2 x 3 DN40 x DN40 x DN50, DN50 x DN50 x 73.0 mm x DN80 | – | 300 2068 |
| | 1 1/2 x 1 1/2 x 2, 2 x 2 x 2 1/2 DN40 x DN40 x DN50, DN50 x DN50 x 73.0 mm | 300 2068 | – |
| EZT | 1 1/2 x 1 1/2 x 2, 2 x 2 x 2 1/2, 2 1/2 x 2 1/2 x 3 DN40 x DN40 x DN50, DN50 x DN50 x 73.0 mm, 73.0 mm x 73.0 mm x DN80 | – | 300 2068 |
| | 1 1/2 x 1 1/2 x 2, 2 x 2 x 2 1/2 DN40 x DN40 x DN50, DN50 x DN50 x 73.0 mm | 300 2068 | – |
| EZF | 1 1/2 x 1 1/2 x 2, 2 x 2 x 2 1/2, 2 1/2 x 2 1/2 x 3 DN40 x DN40 x DN50, DN50 x DN50 x 73.0 mm, 73.0 mm x 73.0 mm x DN80 | – | 300 2068 |
| TF | 1 1/2 x 1 1/2 x 2, 2 x 2 x 2 1/2, 2 1/2 x 2 1/2 x 3 DN40 x DN40 x DN50, DN50 x DN50 x 73.0 mm, 73.0 mm x 73.0 mm x DN80 | – | 300 2068 |
| MF | 1 1/2 x 1 1/2 x 2, 2 x 2 x 2 1/2, 2 1/2 x 2 1/2 x 3 DN40 x DN40 x DN50, DN50 x DN50 x 73.0 mm, 73.0 mm x 73.0 mm x DN80 | 300 2068 | 300 2068 |
| FF | 1 1/2 x 1 1/2 x 2, 2 x 2 x 2 1/2, 2 1/2 x 2 1/2 x 3 DN40 x DN40 x DN50, DN50 x DN50 x 73.0 mm, 73.0 mm x 73.0 mm x DN80 | – | 300 2068 |
| | 2 x 2 x 2 1/2, 2 1/2 x 2 1/2 x 3 DN50 x DN50 x 73.0 mm, 73.0 mm x 73.0 mm x DN80 | 300 2068 | – |
| EF | 1 1/2 x 1 1/2 x 2, 2 x 2 x 2 1/2, 2 1/2 x 2 1/2 x 3 DN40 x DN40 x DN50, DN50 x DN50 x 73.0 mm, 73.0 mm x 73.0 mm x DN80 | 300 2068 | 300 2068 |

NOTES

- ET40: Bull Moose Tube EDDY-Thread Threadable Thinwall Sprinkler Pipe
- MT: For Use with Wheatland Tube Mega-Thread Threadable Thinwall Sprinkler Pipe
- MLT: For use with Wheatland Tube MLT Threadable Thinwall Sprinkler Pipe
- EZT: For use with Youngstown Tube EZ-Thread Threadable Thinwall Sprinkler Pipe
- EZF: For use with Bull Moose Tube EDDY-Flow Non-Threadable Lightwall Sprinkler Pipe
- TF: For use with Tex-Tube Tex Flow Non-Threadable Lightwall Sprinkler Pipe
- MF: For use with Wheatland Tube Mega-Flow Non-Threadable Lightwall Sprinkler Pipe
- FF: For use with Youngstown Tube Fire-Flo Non-Threadable Lightwall Sprinkler Pipe
- EF: For use with Borusan Mannesmann Easy-Flow Non-Threadable Lightwall Sprinkler Pipe

6.0 NOTIFICATIONS

⚠ WARNING



- Read and understand all instructions before attempting to install any Victaulic products.
- Always verify that the piping system has been completely depressurized and drained immediately prior to installation, removal, adjustment, or maintenance of any Victaulic products.
- Wear safety glasses, hardhat, and foot protection.

Failure to follow these instructions could result in death or serious personal injury and property damage.

- These products shall be used only in fire protection systems that are designed and installed in accordance with current, applicable National Fire Protection Association (NFPA 13, 13D, 13R, etc.) standards, or equivalent standards, and in accordance with applicable building and fire codes. These standards and codes contain important information regarding protection of systems from freezing temperatures, corrosion, mechanical damage, etc.
- The installer shall understand the use of this product and why it was specified for the particular application.
- The installer shall understand common industry safety standards and potential consequences of improper product installation.
- It is the system designer's responsibility to verify suitability of materials for use with the intended fluid media within the piping system and external environment.
- The material specifier shall evaluate the effect of chemical composition, pH level, operating temperature, chloride level, oxygen level, and flow rate on materials to confirm system life will be acceptable for the intended service.

Failure to follow installation requirements and local and national codes and standards could compromise system integrity or cause system failure, resulting in death or serious personal injury and property damage.

NOTICE

- Victaulic does not recommend the use of any furnace butt-welded pipe with sizes 2"/DN50 and smaller Victaulic gasketed joint products. This includes, but is not limited to, ASTM A53 Type F pipe.

7.0 REFERENCE MATERIALS

- [10.54: FireLock™ Innovative Groove System IIGS](#)
- [I-101-103 Installation Instructions](#)
- [I-102-104 Installation Instructions](#)
- [I-ENDCAP: Victaulic End Cap Installation Instructions](#)

User Responsibility for Product Selection and Suitability

Each user bears final responsibility for making a determination as to the suitability of Victaulic products for a particular end-use application, in accordance with industry standards and project specifications, and the applicable building codes and related regulations as well as Victaulic performance, maintenance, safety, and warning instructions. Nothing in this or any other document, nor any verbal recommendation, advice, or opinion from any Victaulic employee, shall be deemed to alter, vary, supersede, or waive any provision of Victaulic Company's standard conditions of sale, installation guide, or this disclaimer.

Intellectual Property Rights

No statement contained herein concerning a possible or suggested use of any material, product, service, or design is intended, or should be construed, to grant any license under any patent or other intellectual property right of Victaulic or any of its subsidiaries or affiliates covering such use or design, or as a recommendation for the use of such material, product, service, or design in the infringement of any patent or other intellectual property right. The terms "Patented" or "Patent Pending" refer to design or utility patents or patent applications for articles and/or methods of use in the United States and/or other countries.

Note

This product shall be manufactured by Victaulic or to Victaulic specifications. All products to be installed in accordance with current Victaulic installation/assembly instructions. Victaulic reserves the right to change product specifications, designs and standard equipment without notice and without incurring obligations.

Installation

Reference should always be made to the [Victaulic installation handbook](#) or installation instructions of the product you are installing. Handbooks are included with each shipment of Victaulic products, providing complete installation and assembly data, and are available in PDF format on our website at www.victaulic.com.

Warranty

Refer to the Warranty section of the current Price List or contact Victaulic for details.

Trademarks

Victaulic and all other Victaulic marks are the trademarks or registered trademarks of Victaulic Company, and/or its affiliated entities, in the U.S. and/or other countries.