

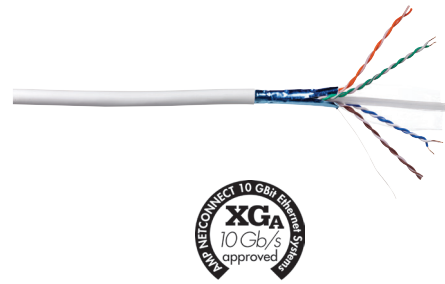
Modular Twisted Pair

Category 6_A - Cable

Category 6_A F/UTP Cable AWG 24

FEATURES

- Qualified against IEC 61156-5 Category 6_A and EN 50288-10-1
- Suitable for 10GBase-T applications
- Overall foil shield, embedded in between synthetic tapes, with drain wire
- AWG 24 solid conductor
- LSZH sheath according to IEC 60332-1 fire rating



Color: white

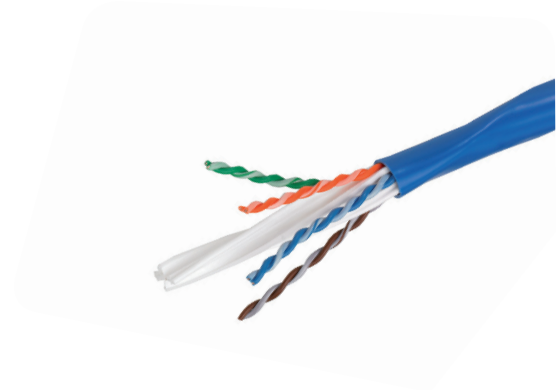
ORDERING INFORMATION

Description	Part Number
AWG 24; Type: Simplex; OD 7.1mm; Packaging: 500 m/Reel	2153022-3

Category 6_A U/UTP Cable AWG 23

FEATURES

- Supports 10Gigabit Ethernet to a full 100m up to 500MHz
- UTP cable, qualified against IEC 61156-5 Category 6_A
- Patented technology with oblique elliptical offset filler to minimise the effect of alien crosstalk and insertion loss
- AWG 23 solid conductor
- LSZH sheath acc. to IEC 60332-1 fire rating



Color: blue

ORDERING INFORMATION

Description	Part Number
AWG 23; Type: Simplex; OD: 7.62mm - 6.5mm x 8.4mm; Packaging: 305m/Reel	2171014-1